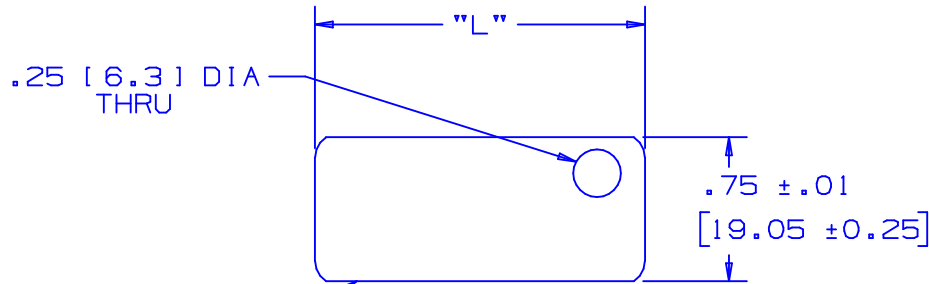


PANDUIT PART NO.	* MATERIAL	PACKAGE QTY.	LENGTH "L" ±.02
MT172-C	304 SS.	100	1.72 [43]
MT172-C316	316 SS.	100	1.72 [43]
MT350-C	304 SS.	100	3.50 [89]
MT350-C316	316 SS.	100	3.50 [89]



AISI #5 EDGES ROLLED TO ELIMINATE SHARPNESS

NOTES:

1. DIMENSIONS IN [] ARE mm.
2. CUSTOM PERMANENT MARKING AVAILABLE. CONSULT FACTORY.
3. TOLERANCES:
 .XXX = ±.010 [.25]
 .XX = ±.02 [.5]
 .X = ±.03 [.8]
 ANGLES = ±2°

S41064_02

							<h1 style="margin: 0;">PANDUIT</h1> <p style="margin: 0; font-size: small;">CORP. TINLEY PARK, ILLINOIS</p>	
							<h2 style="margin: 0;">METAL TAGS - 1 HOLE</h2>	
							UNLESS OTHERWISE SPECIFIED, DIMENSIONAL TOLERANCES ARE: (.X) ± --- (.XXX) ± --- (.XX) ± --- ANGLES ± ---	
							UNLESS OTHERWISE SPECIFIED, ALL DIMENSIONS ARE GIVEN IN INCHES, THIRD ANGLE PROJECTION.	
02	5/02	JAMB		MAT'L FOR PART NO. MT172-C & MT350-C WAS 302 S.S.				
01	1/01	KMD	JAC	MT172-C316 WAS MT172-316C MT350-C316 WAS MT350-316C FILE SPEC WAS NPC_S41064_00	09062	CCH	JAC	DRAWN BY SAM
00	11/91	SM	JAC	RELEASED	00679	GJP	LA	DATE 11/11/91
REV	DATE	BY	CHK	DESCRIPTION	ECN #	PM	CUST	CHK'D JAC
							* STAINLESS STEEL	
							SCALE FULL	
							DRAWING NO. S41064	
							DWG SIZE A	